

SITE:

ZONING:

Existing: PD248 and PD 298

Proposed: New PD

USE: Public school and parking

AREA:

Existing: 1.824 acres

Proposed: 2.90 acres

Floor Area: 78,950 sf

Height: 30 feet






Coverage: 50%

Parking:

Existing on School site: 5 spaces

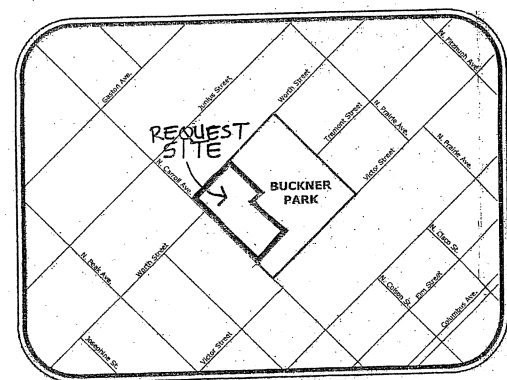
Proposed: 35 spaces

Total spaces: 40 spaces

-  ALLEE ELM (4.5" CAL.)
-  ALLEE ELM (3" CAL.)
-  CEDAR ELM
-  CHINKAPIN OAK
-  CRAPE MYRTLE

PLANT LIST (DISD)

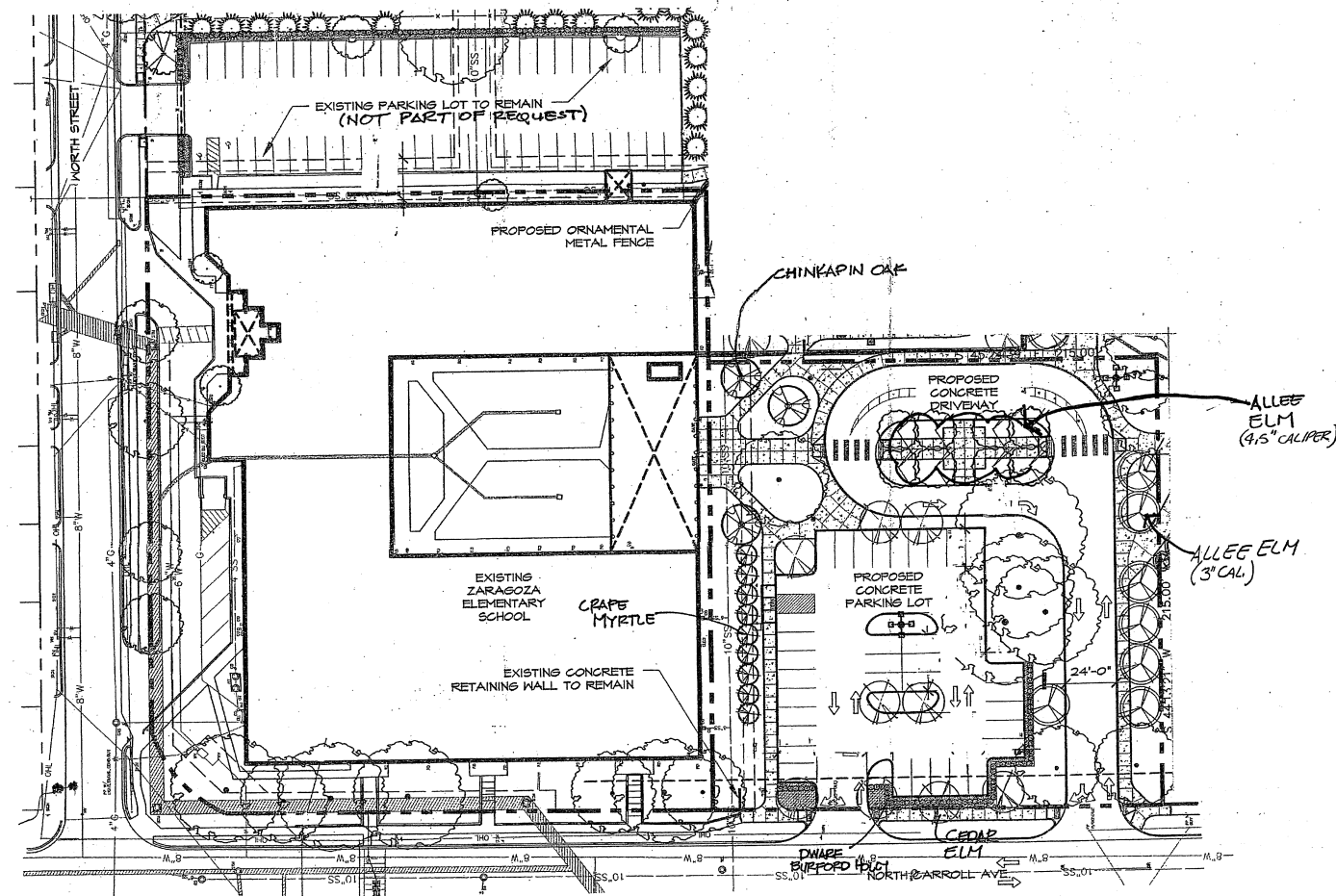
QTY.	COMMON NAME	SCIENTIFIC NAME	SIZE / COMMENTS
LARGE CANOPY TREES			
5	CHINKAPIN OAK (4" cal.)	<i>Quercus muhlenbergii</i>	100 gal, 14-18" H, 3-4" sp., 4" cal. min, mtd&h, full
4	CEDAR ELM	<i>Ulmus crassifolia</i>	45 gal, 10-12" H, 3-4" sp., 3" cal. min, mtd&h, full
1	ALLEE ELM (3" cal.)	<i>Ulmus parvifolia 'Star II'</i>	45 gal, 10-12" H, 3-4" sp., 3" cal. min, spili central leader, mtd&h, full
5	ALLEE ELM (4.5" cal.)	<i>Ulmus parvifolia 'Star II'</i>	200 gal, 18-20" H, 5-10" sp., 4.5" cal. min, spili central leader, mtd&h, full
4	CRAPE MYRTLE	<i>Lagerstroemia indica 'Tuscanora'</i>	50 gal, 6-8" H, 2-3" sp., multi trunk, 3-5 stems min, 1.5" cal. min, each cane, full
SHRUBS			
61	DWARF BURFORD HOLLY	<i>Ilex cornuta 'Burfordii Nana'</i>	1 gal, 18" H, min, 20-30" sp., full
59	ASIAN JASMINE	<i>Trachelopanus asiaticum</i>	1 gal, heavily rooted, full



LOCATION MAP-MAPSCO 46F
NOT TO SCALE



NORTH



DEVELOPMENT/LANDSCAPE PLAN